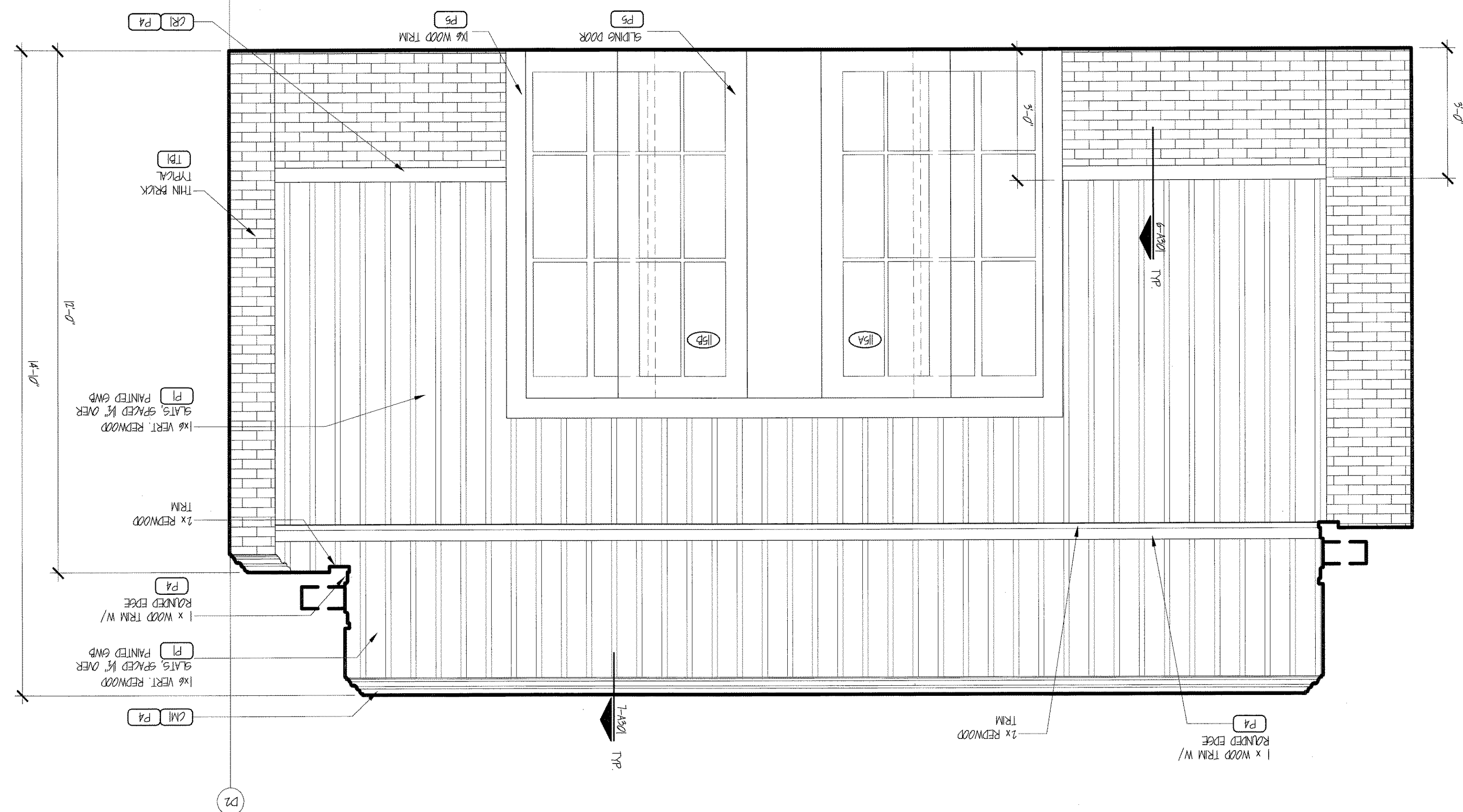


2 INTERIOR ELEVATION SCALE: 1/2" = 1'-0"

SCALE: $1/2" = 1'-0"$



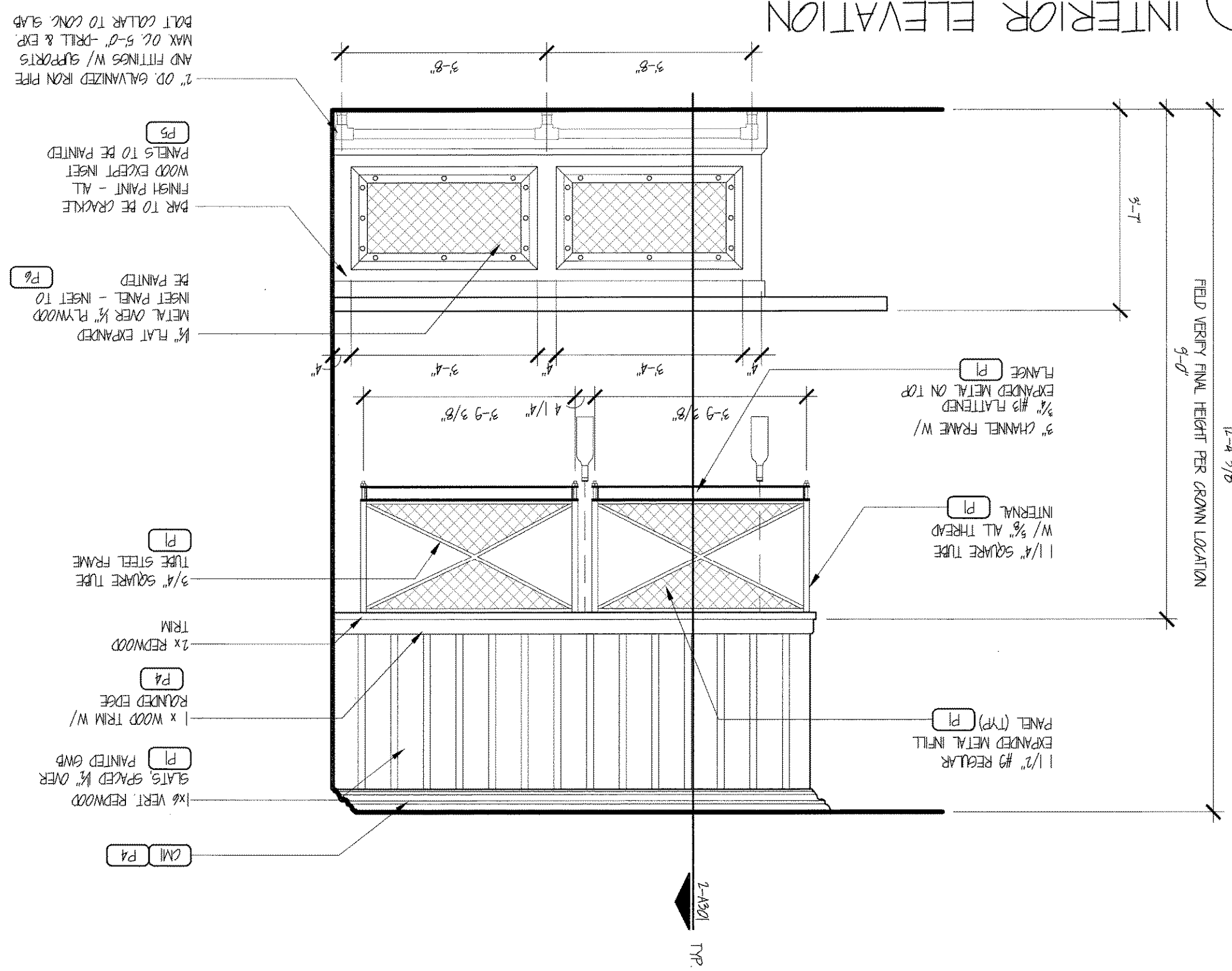
NOTE: PROVIDE SANDED CALKING WHERE REDWOOD AND THIN BRICK MATERIALS MEET. MATCH

4

INTERIOR ELEVATION

SCALE: 1/2" = 1'-0"

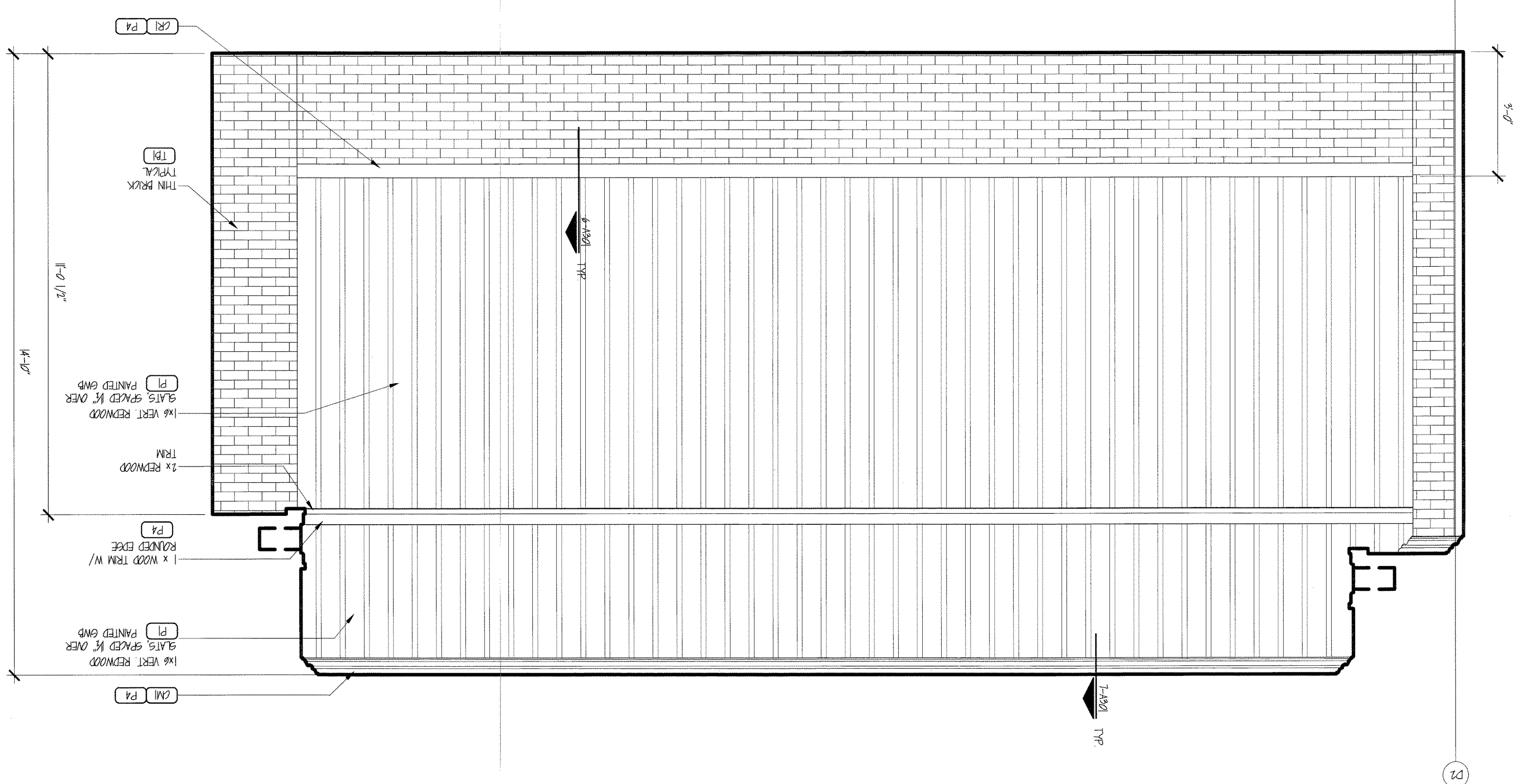
SCALE: 1/2" = 1'-0"



NOTE: PROVIDE SANDED CALKING
WHERE REDWOOD AND THIN BRICK
MATERIALS MEET. MATCH

3 INTERIOR ELEVATION SCALE: 1/2" = 1'-0"

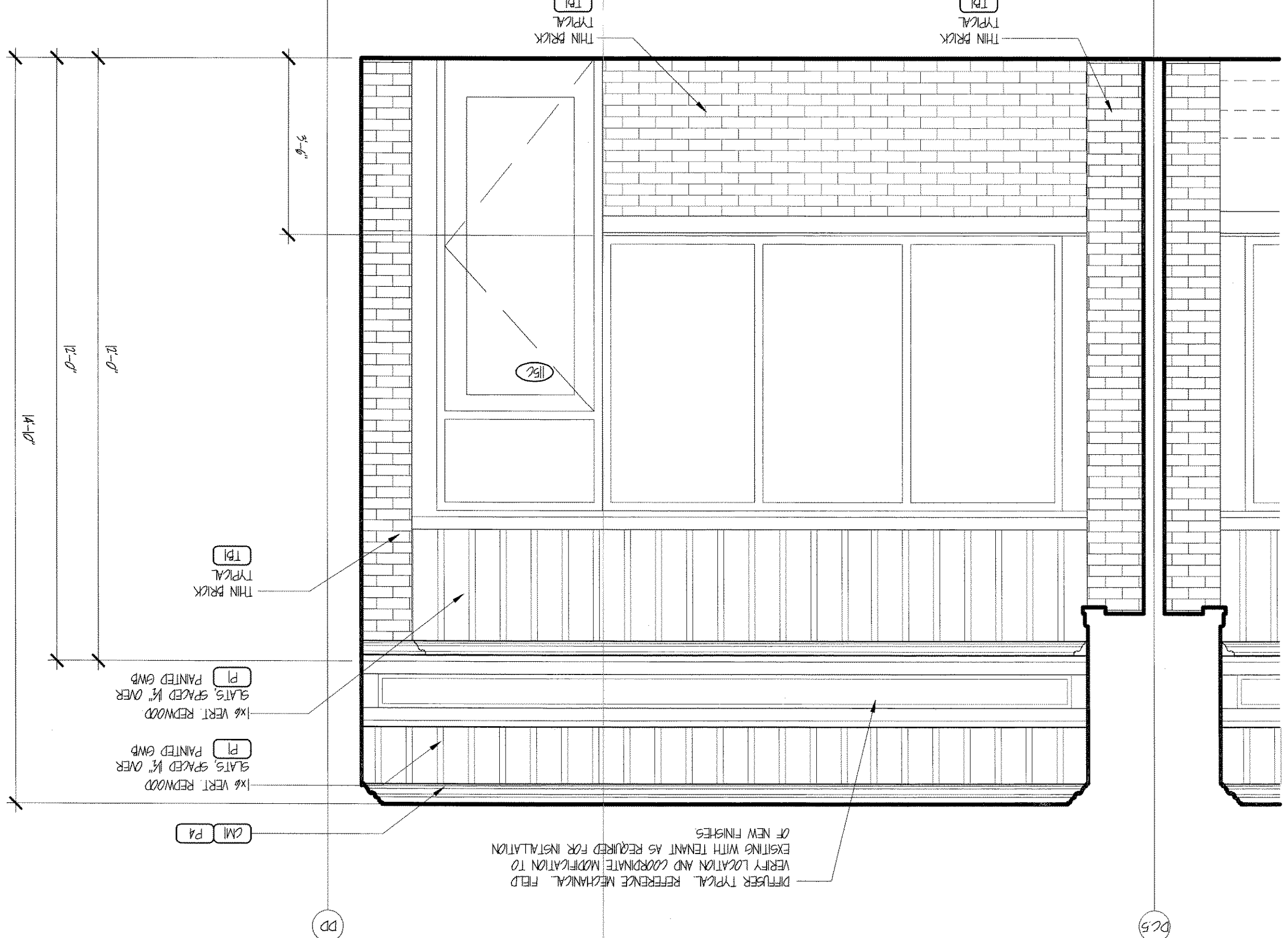
SCALE: 1/2" = 1'-0"



NOTE: PROVIDE SANDED CALKING WHERE REDWOOD AND THIN BRICK MATERIALS MEET. MATCH

① INTERIOR ELEVATION SCALE: 1/2" = 1'-0"

SCALE: 1/2" = 1'-0"



NOTE: PROVIDE SANDED CALIBRATING MATERIALS MEET. MATCH WHERE REDWOOD AND THIN BRICK

- DIFFUSER TYPICAL. REFERENCE MECHANICAL FIELD
VERIFY LOCATION AND COORDINATE MODIFICATION TO
EXISTING WITH TENANT AS REQUIRED FOR INSTALLATION
OF NEW FINISHES.

**INTERIOR
ELEVATIONS**

Sheet No: **A504**

Project: DOWNTOWN at the GARDENS
 Dream: Aaron M. King
 Approved: 12/28/2010
 Issue Date:

Revisions:	No.	Date	Description
------------	-----	------	-------------

This document, and the ideas and designs incorporated herein, as an instrument of professional service, is the property of Aaron M. King, and is not to be used, in whole or in part, for any other project, without the written authorization of Aaron M. King.

DOCUMENTS FOR:

DOWNTOWN at the GARDENS
GRIMALDI'S PIZZERIA
11701 LAKE VICTORIA GARDENS AVE., STE 310
PALM BEACH GARDENS, FL 33410



Aaron M. King
Architect
1221 N. Main Avenue
Springfield, MO 65802
Phone: (417) 864-0916
along.integrity-d@aearthlink.net

GRIMALDI'S
COAL BRICK-OVEN PIZZERIA

4000 N Scottsdale Road, Suite 203
Scottsdale, Arizona 85252
Phone: 405.664.3147 Fax: 405.662.1282

Architect sealing the document:
Aaron Marshall King

